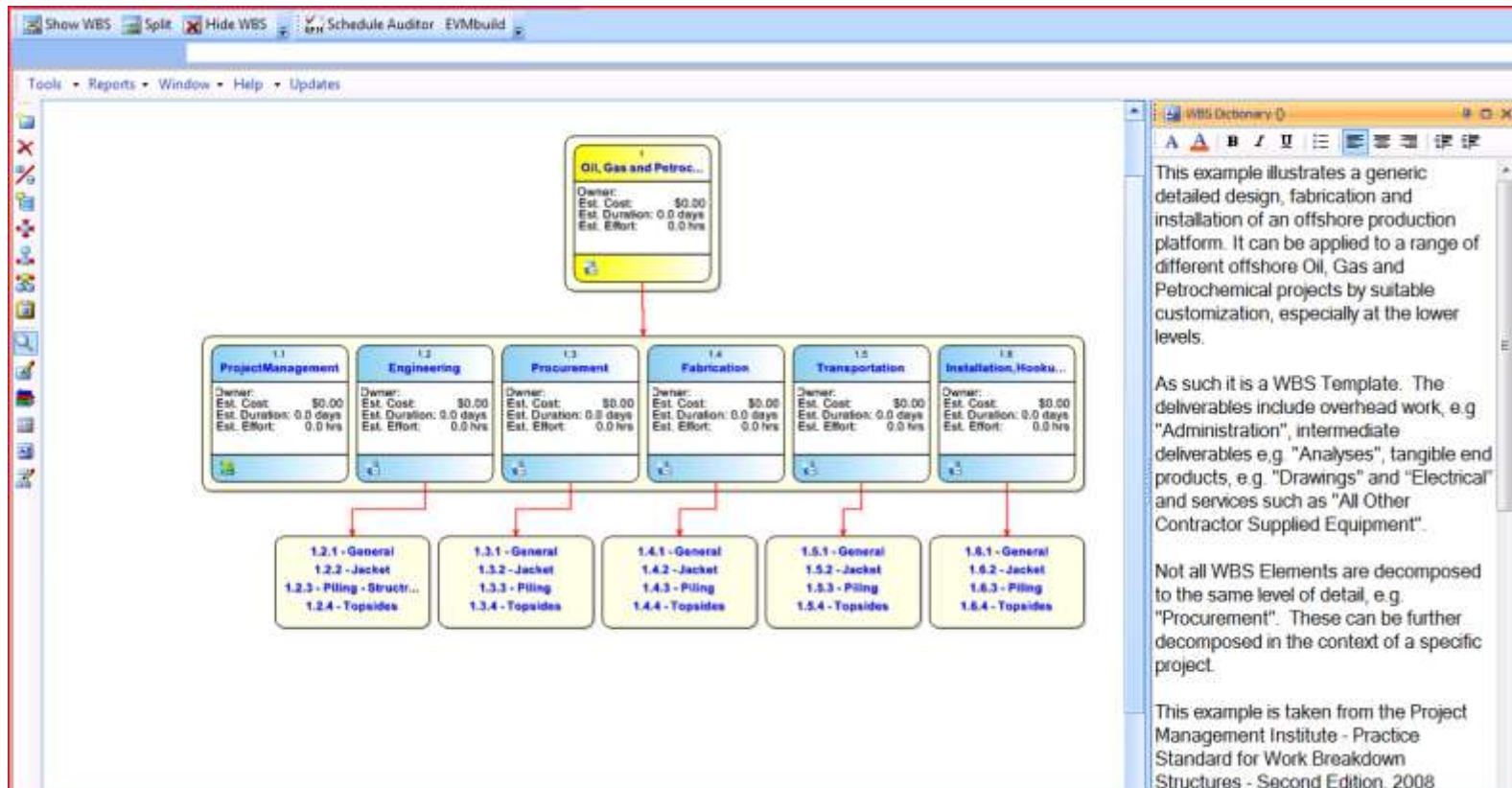


## FREE WBS EXAMPLE provided by QuantumPM

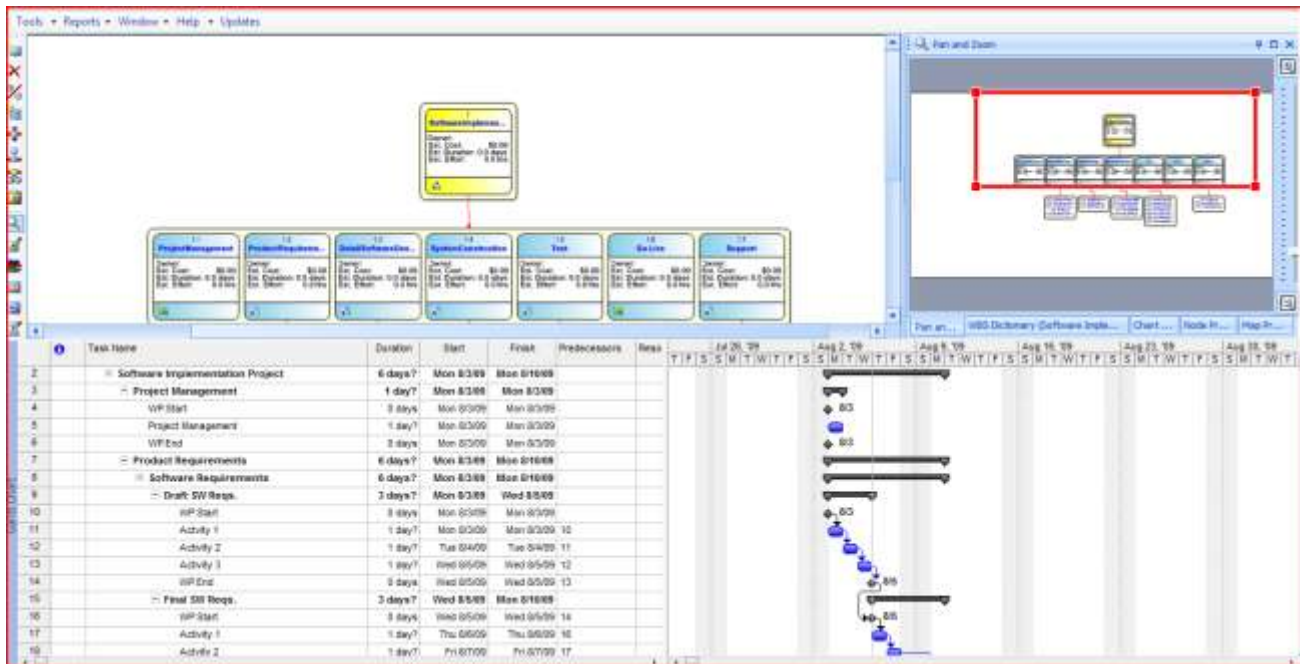
### Oil, Gas and Petochemical Platform WBS Example

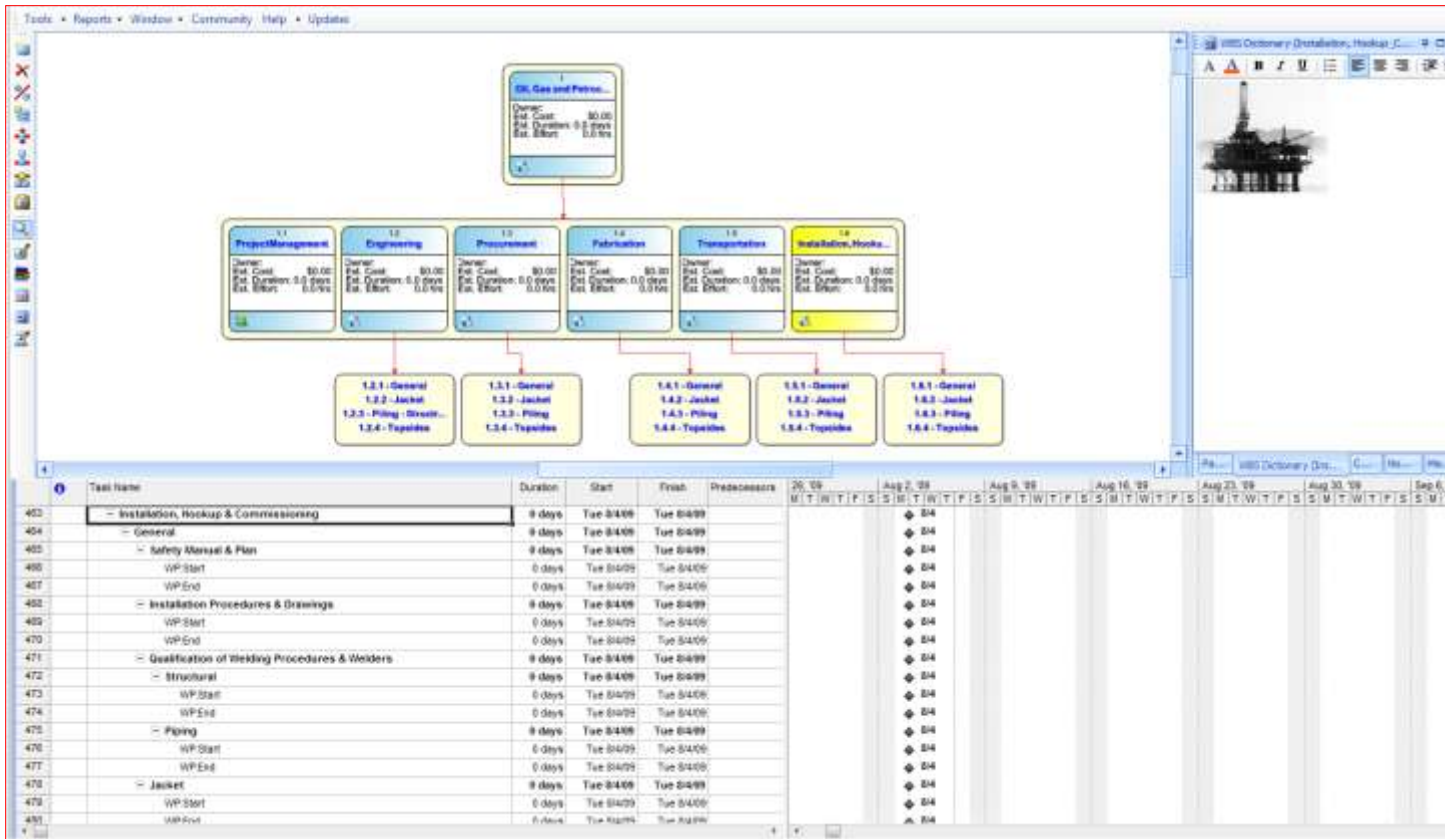
This template depicts a generic WBS built using QuantumPM's **WBS Director** software package. It illustrates projects that include design, fabrication and detailed design of an offshore production platform. It can be applied to a wide range of offshore projects by suitable customization, especially at the lower levels. It is based on an example provided by the Project Management Institute in its *Practice Standard for Work Breakdown Structures, Second Edition*.



The picture above shows the graphical interface of **WBS Director** that allows the user to decompose the project into logical work packages and describe the scope of the elements using the WBS Dictionary shown in the panel on the right-hand side. Behind the scenes, the tool has prepared the framework of the Microsoft Project schedule shown below. Once the work packages have been completed, the detailed activities, resources, and effort components can be built out using the standard scheduling capabilities of MS Project. **WBS Director** works seamlessly inside MS Project to enable the project manager to protect the WBS structure and the scope of the project while keeping it tightly integrated with the schedule.

The screen shots below show the framework of the project schedule that has been build for this template by WBS Director. When created in this manner, the project manager has greater control of the scope of the project because it is clearly visible in a graphic format. All activities shown within the schedule must be supportive of the scope statements shown in the appropriate work package descriptions documented in the WBS Dictionary. Activities cannot be added outside of work packages and once baselined, cannot be deleted without change control procedures that identify the reasons for the change.





Note that this template provides only a frame and it is intended to be modified to fit the specific needs of your project. This example illustrates a generic detailed design, fabrication and installation of an offshore production platform. It can be applied to a range of different offshore Oil, Gas and Petrochemical projects by suitable customization, especially at the lower levels. As such it is a WBS Template. The deliverables include overhead work, e.g. "Administration", intermediate deliverables e.g. "Analyses", tangible end products, e.g. "Drawings" and "Electrical" and services such as "All Other Contractor Supplied Equipment". Not all WBS Elements are decomposed to the same level of detail, e.g. "Procurement". These can be further decomposed in the context of a specific project.

This example is taken from the Project Management Institute - *Practice Standard for Work Breakdown Structures*, Second Edition, 2008.

When a project is created in this manner, the project manager has greater control of the scope of the project because it is clearly visible in a graphic format. All activities shown within the schedule must be supportive of the scope

statements shown in the appropriate work package descriptions (as documented in the WBS Dictionary). Activities cannot be added outside of work packages and once baselined, cannot be deleted without change control procedures that identify the reasons for the change.

*NOTE: This WBS example is illustrative only and is intended to provide guidance to the reader. No claim of completeness is made. For any specific project, the example is intended to be used as a beginning point for further elaboration and modification*

We hope this template provides an excellent starting point for your project!

The QuantumPM Team

<http://www.qpmusa.com/WBS-Director.html>

+1.303.699.2334

